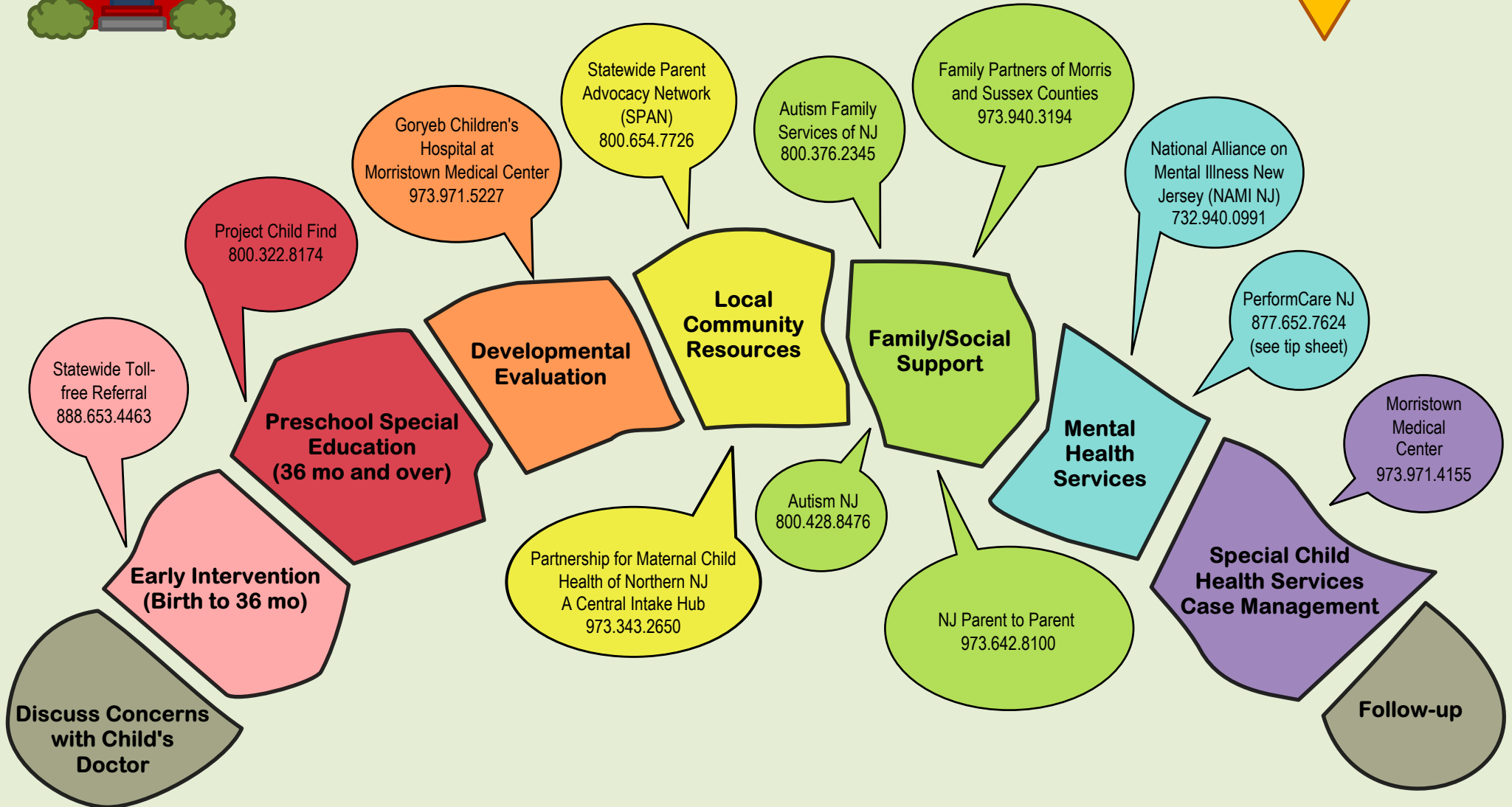




# THE NEXT STEPS

WHEN DEVELOPMENTAL CONCERNS ARE IDENTIFIED



## Additional Resources – Morris County Tip Sheet

### Discuss Concerns with Your Child’s Doctor

If you or your child’s primary caretaker has noticed that your child has not reached age-appropriate milestones, ask your child’s doctor or nurse practitioner for a referral to a specialist. During your appointment, you should also bring up any vision, hearing, or dental concerns.

### Contact NJ Early Intervention (Birth to 3 years old)

The Early Intervention System is the primary point of entry for health and social services. The statewide toll-free number listed on the chart will connect you to someone who will guide you through the enrollment process.

### Contact Preschool Special Education (3 to 5 years old)

Your local school district can give you information on transition planning, school placement, and more.

NJ Department of Education – Office of Special Education Programs  
609-292-4469

### Schedule a Developmental Evaluation

An evaluation team will assess your child for developmental delays, make a diagnosis if needed, and recommend a treatment plan.

### Connect with Local Community Resources

Community resources include advocacy groups, parent workshops, and recreational programs. In addition to the Local Community Resources listed on the flow chart, you may also contact:

Parents of Autistic Children (POAC)  
732-785-1099

MetroWest ABLE  
973-929-3129

The Arc/Morris  
973-326-9750

### Find Family/Social Support

Consider joining a support group to share experiences and resources.

Family Support Center of New Jersey  
800-372-6510

New Jersey Self-Help Clearinghouse  
800-367-6274

Mom2Mom  
877-914-6662

### Contact Mental Health Services

PerformCare NJ connects children and their families to a variety of behavioral health and developmental disability services.

### Contact Special Child Health Services Case Management

Your county’s Special Child Health Services (SCHS) Case Management Unit will coordinate family-centered care for your child.

### Follow-up

Keep in touch with your child’s pediatrician, case manager, child care provider(s), and teacher(s).