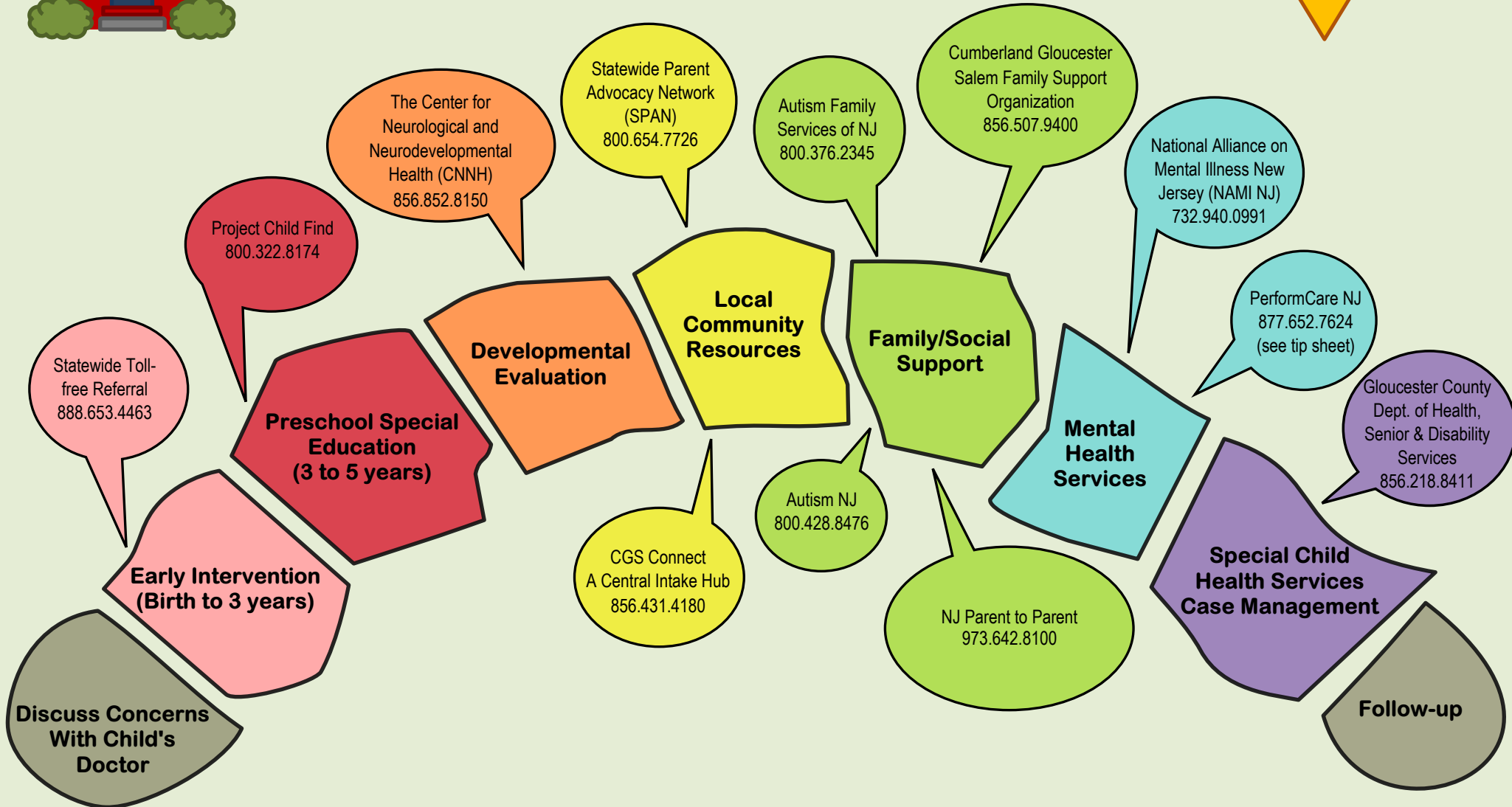




THE NEXT STEPS

WHEN DEVELOPMENTAL CONCERNS ARE IDENTIFIED



Additional Resources – Gloucester County Tip Sheet

Discuss Concerns with Your Child’s Doctor

If you or your child’s primary caretaker has noticed that your child has not reached age-appropriate milestones, ask your child’s doctor or nurse practitioner for a referral to a specialist. During your appointment, you should also bring up any vision, hearing, or dental concerns.

Contact NJ Early Intervention (Birth to 3 years old)

The Early Intervention System is the primary point of entry for health and social services. The statewide toll-free number listed on the chart will connect you to someone who will guide you through the enrollment process.

Contact Preschool Special Education (3 to 5 years old)

Your local school district can give you information on transition planning, school placement, and more.

NJ Department of Education – Office of Special Education Programs
609-292-4469

Schedule a Developmental Evaluation

An evaluation team will assess your child for developmental delays, make a diagnosis if needed, and recommend a treatment plan.

Connect with Local Community Resources

Community resources include advocacy groups, parent workshops, and recreational programs. In addition to the Local Community Resources listed on the flow chart, you may also contact:

Parents of Autistic Children (POAC)
732-785-1099

The Arc Gloucester
856-848-8648

Parents of Autistic Children Together (PACT)
856-278-0798

Find Family/Social Support

Consider joining a support group to share experiences and resources.

Family Support Center of New Jersey
800-372-6510

Mom2Mom
877-914-6662

New Jersey Self-Help Clearinghouse
800-367-6274

Special Parents Exceptional Children (SPEC)
609-352-1667

Contact Mental Health Services

PerformCare NJ connects children and their families to a variety of behavioral health and developmental disability services.

Contact Special Child Health Services Case Management

Your county’s Special Child Health Services (SCHS) Case Management Unit will coordinate family-centered care for your child.

Follow-up

Keep in touch with your child’s pediatrician, case manager, child care provider(s), and teacher(s).