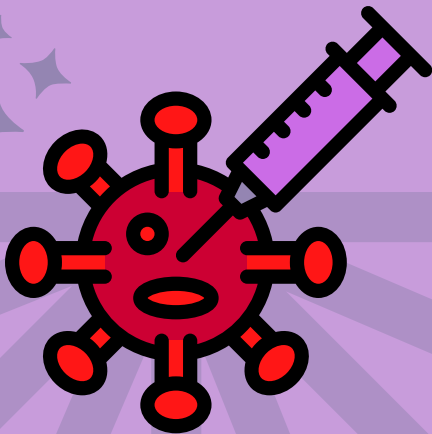


REYALITE KONSÈNAN  
VAKSEN YO

OU TE  
GEN  
COVID?

OU TOUJOU  
BEZWEN VAKSEN  
KONT COVID-19 LA



Reyalite

### OU GEN PLIS CHANS POU W GEN COVID-19 LA ANKÒ

Moun ki pa vaksinen ki te deja gen COVID-19 gen de fwa plis chans pou yo gen COVID-19 ankò pase moun ki konplètman vaksinen<sup>1</sup>



Mit

### MWEN TE GEN COVID-19, KIDONK MWEN GEN IMINITE KONT VIRIS LAN



Sant Kontwòl ak Prevansyon Maladi a (Centers for Disease Control and Prevention, CDC) rekòmande pou tann 90 jou pou w pran vaksen COVID-19 la aprè

- yon tretman pou COVID-19 ak antikò monoklonal oswa plasma konvalesan, oswa
- yon dyagnostik sendwom enflamatwa miltisistemik (MIS-A oswa MIS-C)<sup>2</sup>

Pale ak doktè ou a oswa founisè swen sante w la pou w jwenn plis enfòmasyon

Preparasyon resous sa fèt gras ak yon sibvansyon #90DDUC0036-05-00 ki soti nan U.S. Department of Health & Human Services, Administration for Community Living, Administration on Intellectual and Developmental Disabilities. Desanm 2021.

Sous:

1. Cavanaugh, A.M., Spicer, K.B., Thoroughman, D., Glick, C., & Winter K. (13 dawout 2021). Reduced Risk of Reinfection with SARS-CoV-2 After COVID-19 Vaccination — Kentucky, Me–Jwen 2021. Morbidity and Mortality Weekly Report (MMWR) 2021;70:1081-1083. Konsilte sou <http://dx.doi.org/10.15585/mmwr.mm7032e1>.
2. U.S. Department of Health & Human Services. (21 oktob 2021). Frequently Asked Questions about COVID-19 Vaccination. Centers for Disease Control and Prevention (CDC). Konsilte sou <https://www.cdc.gov/coronavirus/2019-ncov/vaccines/faq.html>

Se The Boggs Center on Developmental Disabilities, Rutgers Robert Wood Johnson Medical School ki fè l, 335 George Street, New Brunswick, NJ 08901 · [rwjms.rutgers.edu/boggscenter](http://rwjms.rutgers.edu/boggscenter) · 732-235-9300