

Developmental Disabilities Lecture Series



FALL 2023 WEBINARS



Friday, September 22, 2023 | 10:00 AM – 12:00 PM

Psychiatric Assessment and Treatment in Individuals with Intellectual and Developmental Disabilities



Allison Cowan, MD, DFAPA

Associate Professor, Deputy Training Director
Department of Psychiatry, Boonshoft School of Medicine, Wright State University, Dayton, OH

Friday, September 29, 2023 | 10:00 AM – 12:00 PM

Toward an Authentically Person-Centered System



Alixe Bonardi, OTR, MHA, FAAIDD

Vice President – IDD
Human Services Research Institute, Cambridge, MA

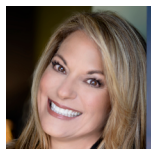


Kate Brady, PhD, ABD

Project Manager
Human Services Research Institute, Cambridge, MA

Friday, October 6, 2023 | 10:00 AM – 12:00 PM

Person-Centered Supervision



Gina Brelesky, MPA

Founder and Lead Coach
Experience Human, Fallston, MD

Friday, October 27, 2023 | 10:00 AM – 12:00 PM

National Core Indicators-Intellectual and Developmental Disabilities (NCI-IDD): Using Data for Quality Improvement and System Change



Dorothy Hiersteiner, MPP

Co-Director of National Core Indicators
Human Services Research Institute
Cambridge, MA



Stephanie Giordano, PhD, MA

Co-Director of National Core Indicators
Human Services Research Institute
Cambridge, MA



Laura Vegas, MPS

Director of Quality Initiatives and Supporting Families
NASDDDS
Alexandria, VA

Friday, September 22, 2023 | 10:00 AM - 12:00 PM | Webinar

Psychiatric Assessment and Treatment in Individuals with Intellectual and Developmental Disabilities

This presentation will cover the most common psychiatric diagnoses and treatments in individuals with intellectual and developmental disabilities (IDD). The biopsychosocial model, trauma-related disorders, depressive disorders, anxiety disorders, psychotic and mood disorders, and personality disorders will be discussed, along with case examples and tools for effective and compassionate treatment.

Allison Cowan, MD, DFAPA

Associate Professor, Deputy Training Director

Department of Psychiatry, Boonshoft School of Medicine, Wright State University, Dayton, OH



Allison Cowan is a board-certified psychiatrist. She specializes in the treatment of mental illness in individuals with intellectual and developmental disabilities. Dr. Cowan graduated medical school from the University of Oklahoma Health Sciences Center and completed her psychiatry residency at Wright State University in Dayton, Ohio. Dr. Cowan completed a two-year Advanced Psychotherapy Program at the Cincinnati Psychoanalytic Institute. She is the deputy training director and an associate professor at the Department of Psychiatry at Wright State University as well as teaching medical students and psychiatry residents. She has won both American Psychiatric Association and NADD's Frank J. Menolascino Award for her work with individuals with IDD and mental illness.

Friday, September 29, 2023 | 10:00 AM - 12:00 PM | Webinar

Toward an Authentically Person-Centered System

In this session, the central values, approaches, and practices essential for an authentically person-centered system will be presented. Participants will learn about the Core Competencies for Person-Centered Planning and the Person-Centered Practices Self-Assessment developed by the National Center on Advancing Person-Centered Practices and Systems (NCAPPS) with support from the federal Administration for Community Living and Centers for Medicare and Medicaid Services.

Alixé Bonardi, OTR, MHA, FAAIDD

Vice President - IDD

Human Services Research Institute, Cambridge, MA



Alixé Bonardi has over 30 years of experience with HCBS for people with disabilities. She is the IDD team lead at HSRI and has grown the National Core Indicator's work, elevating participant voice and experience in state-level quality monitoring of HCBS for people with IDD. She has expertise in health outcomes and

health services delivery for the population with intellectual and developmental disabilities and is currently supporting federal efforts to identify and align analyses of large dataset to identify the population with IDD for prevalence and health surveillance. She has led participant engagement efforts including community-based participatory research, community focus groups, and a grant-funded Citizen's Jury project with people with IDD developing policy recommendations. She has served as principal investigator for several AHRQ-funded and CDC-funded research projects.

Kate Brady, PhD, ABD

Project Manager, NCAPPS & HCBS Settings Rule Engagement

Human Services Research Institute, Cambridge, MA



Kate Brady is project manager for NCAPPS and HCBS Setting Rule Engagement and is particularly excited to grow community response to publicly funded systems of support such that they better fulfill with HSRI's goal of seeing all people living healthy, fulfilling lives as powerful, respected members of society.

Kate has worked in the field of disability policy, service, and systems change for nearly two decades. Prior to coming to HSRI, Kate worked as deputy director at the Georgia Council on Disability and has consulted for University Centers of Excellence at both the University of Georgia and the University of Massachusetts, and worked as director of research at the National Organization on Disability. She brings experiences from work across multiple systems including home- and community-based services, vocational rehabilitation, Medicaid, Social Security, and workforce development.

Friday, October 6, 2023 | 10:00 AM - 12:00 PM | Webinar

Person-Centered Supervision

Being a supervisor is a privilege and its hard work! Sometimes the people management challenges are magnified when supervising a team in the human service industry and the field of IDD. This session will focus on a Person-Centered Supervision Model which, at its core, has the values of empathy, positive regard, and appreciation. When we supervise using this model, we build strong relationship with our team members, maximize their professional development, and build loyalty and trust. Attendees will gain an understanding of Person-Centered Supervision and why it is important to the team member, the organization, and the people supported.

Gina Brelesky, MPA

Founder and Lead Coach, Experience Human, Fallston, MD



Gina Brelesky is the founder and lead coach of Experience Human. She has worked more than 30 years supporting leaders and their teams. Gina has traveled extensively both nationally and internationally facilitating learning events, delivering keynotes, and coaching leaders. A highlight of her career was her work with the Royal Jordanian government to open the first community homes for people with disabilities in the Middle East. She is a teacher at heart and has an unwavering commitment to building the leadership capability and performance of individuals, teams, and organizations. Gina holds Master's degrees in Public Administration and Education as well as a Certificate of Advanced Study in Resilient Leadership.

Friday, October 27, 2023 | 10:00 AM - 12:00 PM | Webinar

National Core Indicators-Intellectual and Developmental Disabilities (NCI-IDD): Using Data for Quality Improvement and System Change

National Core Indicators-Intellectual and Developmental Disabilities (NCI-IDD) is a rich source of data for New Jersey and other participating states. NCI-IDD surveys collect data directly from people receiving services, their families, and provider agencies in the state on critical life outcomes such as satisfaction, choice and decision-making, safety, person-centered service experiences, employment, access, and more. In addition, the NCI-IDD State of the Workforce Survey reports data on the direct support professional (DSP) workforce supporting adults in the DD system. This presentation will explain NCI-IDD, how the data are collected and disseminated, and how state policy-makers, provider agencies, advocates, and other interested groups can use the data to affect change.

Dorothy Hiersteiner, MPP

Co-Director of National Core Indicators
Human Services Research Institute
Cambridge, MA



Dorothy Hiersteiner is a Research Associate and the Co-Director for National Core Indicators, an effort that began in 1997 to develop indicators

and benchmarks of performance across state developmental disabilities service systems. She also developed and currently directs the NCI State of the Workforce Surveys, used to help states collect data on the stability and quality of the workforce of direct support workers. Dorothy's skills in strategic planning and coordination of multiple partner collaborations are critical in her role as coordinator to NCI, whose membership has risen to 48 states including DC.

Stephanie Giordano, PhD, MA

Co-Director of National Core Indicators
Human Services Research Institute
Cambridge, MA



Stephanie Giordano co-directs the National Core Indicators. Stephanie's areas of expertise lie in survey implementation methodology and

techniques (including population-specific techniques), surveyor training, quality assurance, stakeholder engagement, and user-friendly dissemination of information. She applies these skills to work on both the National Core Indicators (NCI)-IDD and National Core Indicators for Aging and Disabilities (NCI-AD) projects and leads training and quality assurance activities on both ventures.

Laura Vegas, MPS

Director of Quality Initiatives and
Supporting Families
NASDDDS, Alexandria, VA



Laura Vegas is the Director of Quality Initiatives and Supporting Families at the National Association of State Directors of

Developmental Disabilities Services (NASDDDS). Previously, Laura was with Blue Cross/Blue Shield TN where she lead Tennessee's first Managed Long Term Supports and Services program for people with IDD. She also has extensive experience within organizations serving individuals with I/DD and began her career serving as a direct support professional for residential services.

Developmental Disabilities Lecture Series



FALL 2023 WEBINARS



The Boggs Center's Developmental Disabilities Lecture Series is a community and continuing education program provided for professionals, policymakers, individuals with disabilities, and family members to enhance their knowledge and skills in innovative approaches and state of the art practices for people with developmental disabilities. Nationally known speakers with expertise in their field serve as faculty for the program. Eight sessions of the Developmental Disabilities Lecture Series are held each year, four in the Fall, and four in the Spring.

Funding for the Series is provided by the Division of Developmental Disabilities, Department of Human Services, State of New Jersey and the Administration on Disabilities, US Department of Health and Human Services.

REGISTRATION

The Fall 2023 Developmental Disabilities Lecture Series will be held on the Zoom Webinar platform.

To access the webinars, you must register in advance on The Boggs Center Online Registration System at:
<https://boggscenterregistration.rwjms.rutgers.edu/index.php/event/lecture>

The webinars are free of charge. Space is limited for each of the sessions. Open to people who live or work in New Jersey.

For additional information about DDLS Webinars, including system requirements, please view [Frequently Asked Questions](#)

If you have any questions, please contact Debbie Mahovetz at deborah.mahovetz@rutgers.edu or 732-235-9543

CONTINUING EDUCATION AND CERTIFICATES OF ATTENDANCE

As part of Rutgers, The State University of New Jersey, The Boggs Center offers this program for general social work continuing education credit per NJAC 13:44G6.4.c(5). The Boggs Center is a registered NJ Department of Education Professional Development Provider. The Fall 2023 sessions have been submitted to the Commission on Rehabilitation Counselor Certification (CRCC) for continuing education program approval.

Each session is eligible for 2 hours of continuing education recognition. **To demonstrate completion and receive a Certificate, you must be logged into the webinar from start to finish and complete a survey at the webinar's completion.** Certificates of Attendance will be emailed to all participants who meet these eligibility requirements the week following the event.